



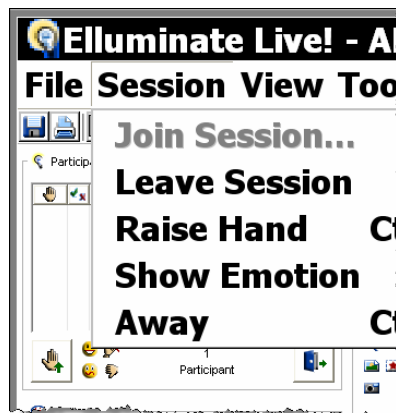
Elluminate and Accessibility: Receive, Respond, and Contribute

More than 43 million Americans have one or more physical or mental disabilities. What's more, as an increasing number of aging baby boomers become lifelong online learners, the demand for accessible eLearning environments will also increase. At Elluminate, we recognize that accessibility challenges to learn in the virtual world are not dissimilar to the accessibility challenges to learning in the physical world. As a result, we've designed Elluminate *Live!* to provides visual, auditory, physical, and learning assistance.

Our *No User Left Behind*[™] core philosophy aligns us with federal goals regarding individuals with disabilities and the need to assure them equality of opportunity, full participation, independent living, and economic self-sufficiency. Our accessibility features provide an opportunity for people with disabilities to fully participate in online learning, online meetings, and online conferences.

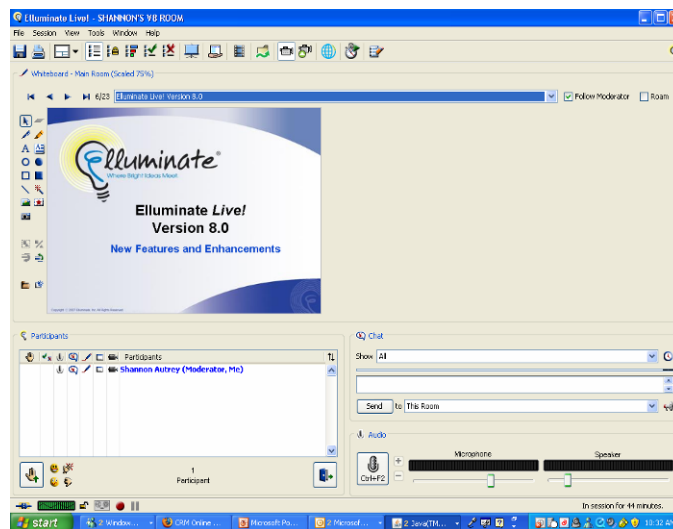
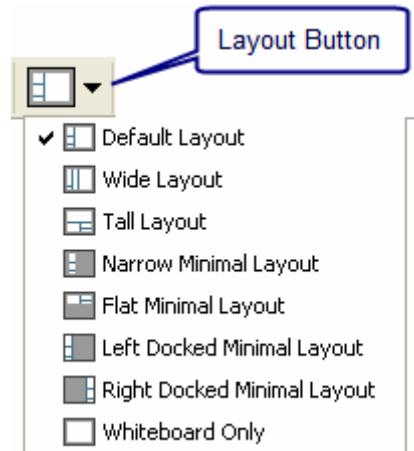
Visual Accessibility Features

Visually impaired individuals will find that many tools and features in Elluminate *Live!* have been designed specifically to make the session accessible. For example, Elluminate *Live!* automatically inherits user-defined color schemes, such as high contrast, from the operating system. The screen shot below shows an Elluminate *Live!* session on a computer set to Windows classic style, high-contrast white, and extra-large Fonts.



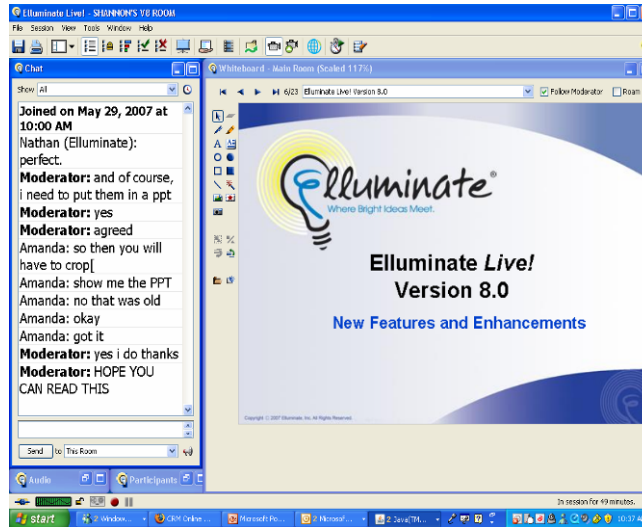
Session-inheriting Operating System Settings

The Elluminate *Live!* user interface can be customized to hide certain components and will remember the “last-used” layout. In this way, participants have ultimate flexibility in receiving only the content they want. This allows both visually and hearing-impaired participants to unsubscribe to content that would otherwise interfere with their best use of the software. For example, you can choose to hide the text messaging component or the live webcam video component. To change the layout, select the **Layout** button as shown below or select **Layouts** from the **View** menu.



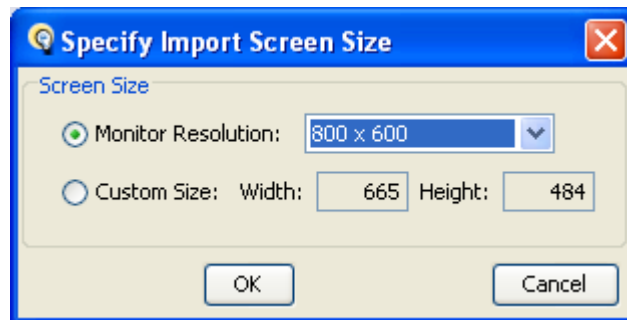
Example of the Tall Layout

Additionally, you can resize content areas, such as the whiteboard, application sharing, live video and chat, by unlocking the layout. Select **Layouts Locked** from the **View** menu to resize and relocate windows to create your own unique layout, which Elluminate remembers.




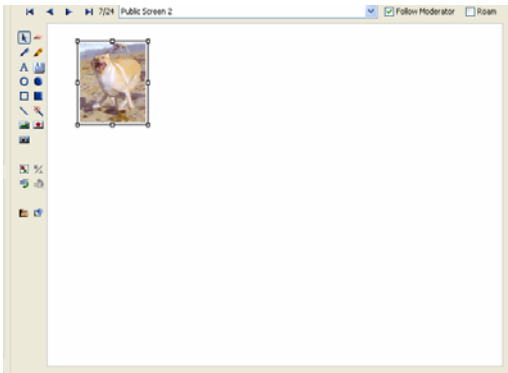
Custom Layout

It is important that a participant with a visual impairment be able to see the content added to the session. There are several tools available that make it easier to read the content. First, you can load presentations into an Elluminate *Live!* session at any desired resolution. You may choose from a list of pre-set resolutions or create a custom size.



You can also display presentations in a full-screen view using the moderator-activated Presentation Mode tool, which is available for displaying whiteboard content and application sharing.

You can also resize a small image placed on the whiteboard for easier viewing. Select the  tool from the whiteboard tools palette, click on the image, and use the corner arrows to enlarge and place the image.



Example of an Image Resized on the Whiteboard

Additional accessibility features for individuals with limited vision include the use of VoIP audio that can be activated using keyboard shortcuts. Accelerator or shortcut keys are also available to access menus and tools, such as chat and the whiteboard.

Audio indicators are available to notify the moderator when new users enter the session and when users raise their hands to ask questions.



Screen Readers for the Print Challenged

Elluminate meets the requirements of ADA compliance for those who use screen reader products, such as JAWS and Narrator. The Java Accessibility Bridge allows these screen readers to read the interface and provide auditory cues about the software functionality. The Java Accessibility Bridge is free and can be downloaded from the Elluminate website at http://www.elluminate.com/support/java_accessibility.jsp. These screen readers read the user interface, including menus and dialog boxes. However, they cannot read the text on a whiteboard screen.

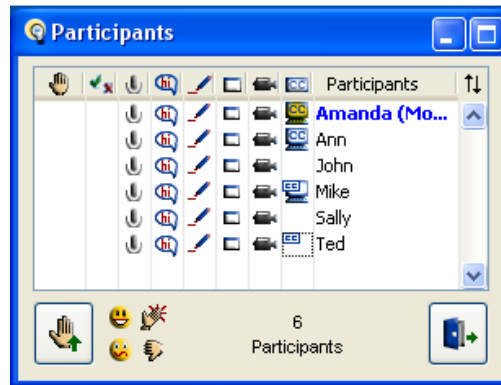
Features for the Visually or Physically Challenged





Simple navigation on a computer using a mouse can often stand between those who are physically challenged and their ability to use a computer. Elluminate *Live!* supports a full complement of keyboard shortcuts or hot keys. Using hot keys enables you to activate the audio, and use chat, the mini controller, emoticons, and much more.

Action	Hot Key
Snapshot to the whiteboard in app sharing	Ctrl + Print Screen
Take back control in application sharing	Ctrl + Space bar
Show & hide the mini controller	Ctrl + F9
Terminate application control	Ctrl + Pause
Press & Release the Talk button	Ctrl + F2
Start & stop the video transmission	Ctrl + F3
Chat	Ctrl + m
Laughter emoticon	Ctrl + alt + 1
Applause emoticon	Ctrl + Alt + 2
Confusion emoticon	Ctrl + Alt + 3
Disapproval	Ctrl + Alt + 4
Hand Raise	Ctrl + R
Polling – Yes	Ctrl + 1
Polling – No	Ctrl + 2
Open File menu	Alt + F
Open Session menu	Alt + S
Open View	Alt + V
Open Tools	Alt + T
Open Window	Alt + W
Open Help	Alt + H

Hearing Accessibility Features

The Closed Captioning feature in Elluminate *Live!* provides a mechanism, through closed captioning text, to view a transcript of the session while the session is in progress. A moderator in the session may give one or more attendees the privilege to enter closed captioning text that anyone in the session can view. Closed captioning is also available during the playback of a recorded Elluminate session. The size of the closed captioning text can be increased up to a font size of 32 and can be saved as a text file for review outside of the live or recorded session.



Icon	Description
	This icon appears in the upper left-hand corner of the closed captioning column, indicating that the participant has the <i>view-only</i> closed captioning window open on their monitor.
	This icon indicates that the participant has been given the privilege to enter closed captioning text.
	When a participant is entering closed captioning text, the closed captioning text icon will appear in a yellow background color.
	The participant has permission to enter closed captioning text, but is currently viewing closed captioning text from another participant.

The Closed Captioning tool is very simple to use therefore a friend, family member or hired professional can provide the captioning service. Voice recognition software such as IBM's ViaVoice, Dragon Naturally Speaking and i-Listen for the Mac can be used to capture the audio from the session transpose it into text and populate the captioning window.

Other features designed to help learners with hearing impairments include Chat and the Whiteboard. Chat can be used instead of or in conjunction with audio. Public chat and private chat are available to the moderator and to participants to exchange messages in text format. Additionally, the chat log can be saved for review after the session. The Whiteboard can also be used to display content visually instead of verbally.

Learning Disability Features

An instructor can provide extra time to read the slide presentation and can explain any visual content using audio for students who may be having trouble reading. An instructor can also take a single learning into a Breakout Room to spend extra one-on-one time. Participants can ask questions verbally if they have a microphone or can type questions into the Chat window.

Conclusion

In keeping with our principle of No User Left Behind, we have designed Elluminate *Live!* so that individuals with disabilities are able to fully participate in online learning and web conferencing sessions. To learn more, visit <http://www.illuminate.com/accessibility.jsp>, where you'll find a white paper that includes the Voluntary Product Accessibility Template (VPAT) for Elluminate *Live!*