



What's New in Elluminate *Live!* Version 8.5

We are very excited about the June 2008 release of V8.5 of Elluminate *Live!* Our focus continues to be on providing best-in-class solutions for learning and collaboration that enhance the delivery of knowledge for exceptional outcomes across your global enterprise.

Our enabling technology and "learning-edge" products take you beyond the virtual classroom to support the entire instructional cycle—what happens BEFORE, DURING, and AFTER your real-time online session. With V8.5, Elluminate *Live!* now supports the use of Elluminate *Plan!* during a session.

Elluminate *Plan!* is our newest "learning-edge" product that enables you to organize, script, and package content and activities BEFORE your real-time session. You can define content and interactions ahead of time. Then during your Elluminate *Live!* session, trigger each action, like starting the recording, advancing to the next slide, creating breakout rooms, or playing a multimedia file, with a single click of the next button.

New features in V8.5 are summarized below.

Audio Window

- The user interface of the Audio window has been updated to re-position the audio sliders.

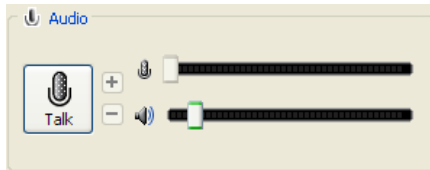


Figure 1: New audio window

Polling

- The command Tools > Polling > Publish Statistics to Whiteboard now publishes polling results to the current screen as a foreground image.
- Previously, the results were published to a newly inserted screen with the results placed as an image in the background.
- The new method allows presenters to leverage the whiteboard where, if the question is posed on the whiteboard screen, the results are shown on the same screen when published. This allows attendees to easily view the question and responses.

Presentation Mode

- A new controller has been added to Presentation Mode, replacing the former semi-transparent controls. It allows additional controls to be included without obstructing the display area.
- The new controller includes buttons for opting out of Presentation Mode and talking. When application sharing, the controller also has buttons for requesting control of an Application Sharing session and scaling the Application Sharing window to fit.



Figure 2: The controller seen for an attendee viewing a shared application in presentation mode.

Application Sharing

- A new "Request Elevated Privileges" feature has been implemented for Vista users. This makes Elluminate *Live!* Application Sharing compatible with Vista's User Account Controls.
- Two new visual cues have been added: a magenta border is displayed to a user remotely controlling an application sharing session and a yellow border is displayed to all users when an application sharing session is viewed in Presentation Mode.

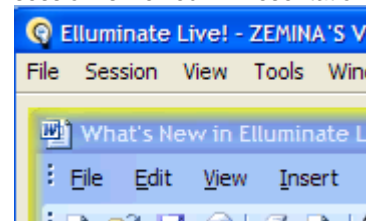


Figure 3: Yellow border when viewing an application or whiteboard in presentation mode.

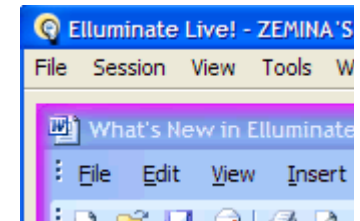


Figure 4: Magenta border when controlling an application

Load Session Plan Files

- Elluminate *Plan!* files are saved as .elp files. The new option of File > Open > Session Plan... allows moderators to load their plan files into the Session Plan Library.
- Once loaded into the Elluminate *Live!* session, moderators simply activate the plan and using the Next button, they can trigger each action.

