



## What's New in Elluminate Live! V9.5 and Higher

### New and Improved User Interface

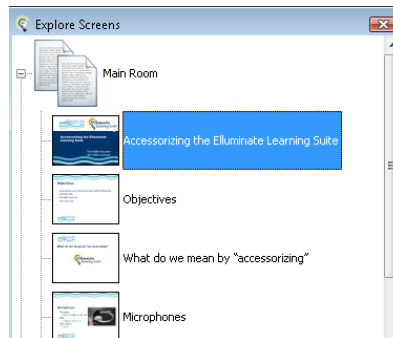
- Updated icons creating a fresh look
- Polling buttons are now located in the Participant window and the Quiz Manager button has been added to the main toolbar

### Audio and Video

- Improved audio fidelity and significantly reduced audio lag for high bandwidth users
- Near lip sync with video yet significantly reduced bandwidth requirements
- Much smoother frame rates and an increased default frame rate (now set at 10 fps)

### Whiteboard

- Text tool redesign making it easier to add content and to edit text
- A new clip art palette of Elluminate buttons and icons allowing users to load images onto the whiteboard for user help and to include in documentation
- The Screen Explorer now shows screens in text or as graphical images. In addition, whiteboard screens can easily be reordered using drag and drop functionality.
- Speaker notes in PowerPoint or OpenOffice presentations can be loaded into the Elluminate Live! Synchronized Notes tool



### Breakout Rooms

- A new copy screen panel allows moderators to easily select content from all or selected breakout rooms and copy the content into another room

- The distribution of users has two enhancements:



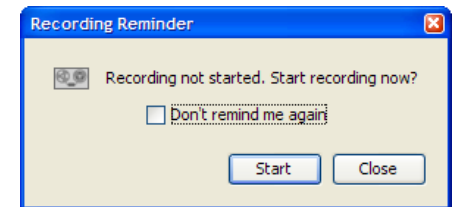
- Using new drag and down functionality, attendees can be selected from the Participant window and moved to a new breakout room in one set.
- Users can be given the permission to move from room to room. This is ideal for academic fairs, orientations where topics of interest can be hosted in each breakout room and participants can move through the rooms to learn at their own pace.

### Application Sharing

- Visual indicators are now provided to identify the shared area for the host by a colored border. A new option to "Emphasize Cursor" is available for the host of the shared application where the host's cursor will appear surrounded with a colored circle making it easier to follow.
- An access controller is available for the host of the shared applications to easily stop or pause sharing or to capture a screen shot.
- When viewing a shared application, the Application Sharing window can be resized and repositioned by each attendee. The shared application window can be moved to a second monitor as well.

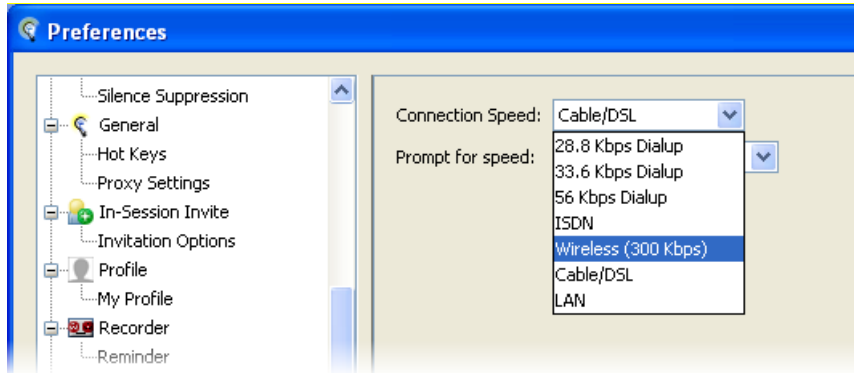
### Recording

- The Elluminate session now provides a reminder to start the recording at the beginning of a session. When a moderator joins a session, a dialog box appears with a prompt to start the recording. An audible indicator is also provided when the recording starts and stops.
- Improved indexing in a recording showcasing the index marks and allowing users to easily fast forward and rewind the recording and to jump to a particular index marker in the recording.



### New Wireless Connection Speed Preference

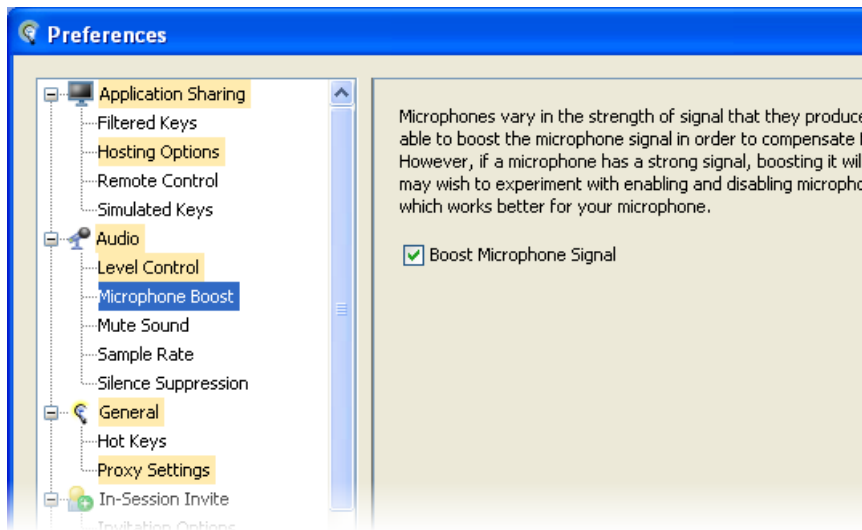
A new Connection Speed preference for wireless connections has been added to the Session Connection preferences dialog.



### New Color Indicator for Unapplied Preferences

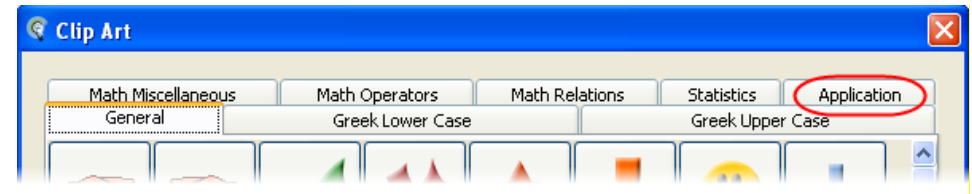
Yellow highlighting on a preference Panel in the Preferences list indicates there are changes to the Panel that have not yet been applied. The Module to which the Panel belongs also will be highlighted. For example, in the screen capture below, the Application Sharing Module is highlighted because its Hosting Options Panel has unapplied changes.

To clear highlighting from all Panels and Modules, click on **Apply**.



### Clip Art Library Tab

The "Elluminate" tab in the Clip Art Library has been renamed to "Application".



### Other Enhancements

- Multimedia window now support the playback of WMV files.
- Multiple participants can be promoted to Moderator status simultaneously.
- Elluminate *Live!* supports the display of international dial-in numbers for both moderators and participants